

APPRENTICESHIP Resource Guide



Emerald Cities
LOS ANGELES



Southern California Regional Energy Network



Dear Stakeholder:

This Apprenticeship Resource Guide is made available to you by the Southern California Regional Energy Network (SoCalREN) workforce development pilot program administered by the County of Los Angeles in partnership with the Emerald Cities Collaborative.

The SoCalREN is a local government regional energy network pilot program serving SCE and SCG service areas. The program will achieve greater energy savings during the development and implementation of local energy sustainability programs by providing local government agencies with technical assistance, project management, and financing to execute energy efficiency retrofit projects in their facilities.

The County of Los Angeles will award energy efficiency projects using a procurement strategy that promotes local, small contractor participation and an integrated workforce development strategy that stimulates the creation of local, highly skilled careers. This Apprenticeship Resource Guide provides local residents with an introduction to union apprenticeship programs, eligibility requirements, and wage information to make decisions about entry into a high-skill career in the construction trades. Veterans are encouraged to consider a career in construction and many apprenticeship programs have specific guidelines and benefits for the men and women who served in the United States military. Please contact the apprenticeship programs directly for additional information since some of the information contained herein may have changed since publication.

THANK YOU

Great appreciation is extended to the Los Angeles/Orange County Building and Construction Trades Council for their partnership in the SoCalREN's workforce development pilot program, and to all the apprenticeship directors and coordinators who contributed their comments and additional program information for the Apprenticeship Resource Guide. Their partnership and support is invaluable to our efforts to facilitate access to high quality careers in the construction industry.

This Apprenticeship Resource Guide is also available for download at www.emeraldcities.org or www.LAEnergyWorks.org.

Introduction

WHAT IS UNION APPRENTICESHIP?

Union Apprenticeship Programs prepare individuals to become a highly trained and skilled journeyman/woman to meet the competitive challenges of today's global market economy.

EARN AS YOU LEARN

Apprenticeship is classroom and on-the-job paid training! Students learn and practice all phases of their specialized craft.

EXPERTS IN THE FIELD

The Apprenticeship programs train men and women to become experts in their specialized craft through state-of-the-art training and career advancement opportunities.

The benefits of the Union Apprenticeship Programs are many: the opportunity to earn while you learn; excellent wages and benefits; safe working conditions; and pride and dignity.

PREREQUISITES & REQUIREMENTS

Each Union Apprenticeship Program has its own eligibility and admission requirements. Generally, to be eligible, you must be at least age 18; able to perform the work of the trade; and you may also be required to present verification of a high school diploma or GED certificate. You may also be required to demonstrate the ability to read, write and speak English in order to comprehend instruction in related training classes and ensure safety on the job.

THE SKY IS THE LIMIT

There are many apprenticeship programs from which to choose, so get on your path to success today!

Directory of Specialized Crafts

Boilermakers	1
Bricklayers.....	2
Carpenters	3
Cement Mason.....	4
Drywall/Finisher.....	5
Electrician (inside wireman).....	6
Floor Layers.....	7
Glaziers	8
Heat & Frost Insulators/Asbestos	9
Laborers	10
Landscape & Irrigation Fitters.....	11
Operating Engineers	12
Painters	13
Pile Drivers, Bridge Wharf & Dock	14
Plumbers	15
Refrigeration & Air Condition Fitter.....	16
Reinforcing Ironworker	17
Roofer & Waterproofers	18
Sheet Metal Worker.....	19
Steam Fitter/ Pipe Fitter	20
Structural Ironworker	21
Sound & Communication	22
Surveyor.....	23
Tile Finisher & Marble Finisher	24
Transportation Systems	25
Helmets to Hardhats.....	26

Specialized Craft

Boilermakers

Skills To Be Learned

The boilermakers trade involves the fabrication, installation, modification and repair of boilers, hydro dams, tanks, pressure vessels, petroleum refineries, chemical plants, paper mills, steel mills, food and beverage plants, furnaces, and associated equipment, such as stacks and platforms based in power plants.

The skills required of a construction boilermaker include reading blueprints, rigging heavy loads, burning, welding layout, fabricating metal parts, and often working in high places in excess of 100 feet.

Wages

Hourly wages start at \$26.84 for entry-level apprentices and \$38.00 for journeymen.

Benefits

Health and welfare, vacation, annuity and pension plans.

Contact

Boilermakers Apprenticeship

Jay Rojo
Apprenticeship Coordinator
2260 Riverside Avenue
Bloomington, CA 92316
(909) 877-9382 phone
(909) 877-8318 fax

www.boilermakerslocal92.com

When to Apply

First Wednesday of every month from 7:00 AM to 3:30 PM

Length of Program

Some requirements that a Boilermaker Apprentice must meet, within four years, to become a Journeyman are completion of 576 hours of classroom instruction 48 self-study lessons 21 on-the-job modules on Boilermaker fundamentals

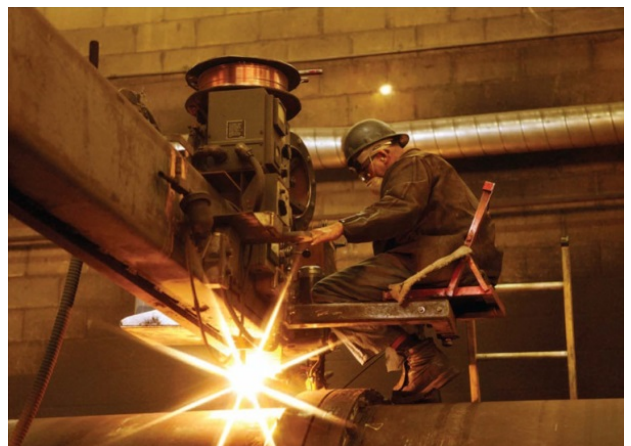
Performance-based testing prior to advancement
Minimum 6,000 work hours required followed by 2,000 hour probation period.

Requirements

Apprenticeship applications are available the first Wednesday of each month at Local 92. Must be 18 years of age, and have a high school diploma or G.E.D.

Union

International Brotherhood of Boilermakers, Iron Shipbuilders, Blacksmiths, Forgers and Helpers Local Union



Specialized Craft

Bricklayers

Skills To Be Learned

Bricklayers build walls, chimneys and other structures from masonry units such as brick, block, glass block or stone as well as Brick, Stone, and Marble paving systems. They also line industrial kilns and furnaces, and may work in sewers. Generally, the Bricklayer's technique is to spread the bottom and side of each unit with mortar and position it by hand, cutting off excess mortar and later trimming it to achieve a neat appearance. Work is kept level by use of a tightly stretched line and must be checked frequently for level and plumb. Some units must be cut to fit. Bricklayers often work from scaffolding. The work, especially block work, is often strenuous. In a related trade, the Pointer-Cleaner-Caulker (PCC) patches weathered masonry, replaces old mortar and does caulking, waterproofing and cleaning of both new and old masonry. They often work on swing scaffold twenty (20) stories or more up.

Wages

Hourly wages start at \$13.06 for entry-level apprentices and \$37.30 for journeymen.

Benefits

Health and welfare, vacation, annuity and pension plans.

Contact

Brick Masons Apprenticeship and Training

Gary Anthony, Apprenticeship Coordinator
12921 Ramona Boulevard, Suite F
Irwindale, CA 91706
(626) 856-5750 phone
(626) 856-5751 fax

www.bac4ca.org

When to Apply

Applications are accepted on the first Thursday of the month and the process includes an orientation session from 11:00 A.M. to 12:00 noon. Call for an appointment.

Length of Program

Typically, the apprenticeship will consist of 6,000 hours on-the-job for eight periods, or 4,500 hours for six periods in PCC. After each period, apprentices are evaluated for a wage increase, provided they also completed the required hours in related classroom instruction.

Requirements

Applicants must be at least 18 years of age and must be able to lift 50+ pounds continuously and work on staging above ground. Currently, no high school diploma or GED is required.

For PCC, applicants must be able to work on swing staging multiple stories high and have no fear of heights! Must be willing and able to attend training school two Saturdays per month.

Union

Bricklayers and Allied Craft Workers Local 4



Specialized Craft

Carpenters

Skills To Be Learned

Through on-the-job and related supplemental instruction, this apprenticeship program provides training in all phases of residential, commercial and industrial construction. The program includes structural framing, blueprint reading, layout, finish hardware installation, and all form work for concrete. Specialty areas include millwrights, pile drivers, drywall/acoustical and cabinet makers.

Wages

Hourly wages start at \$13.07 for apprentice level positions and \$37.35 for commercial journeymen.

Benefits

Health and welfare, plus pension plans.

Contact

Southwest Carpenters Training

Kim Ferguson, Director
533 S. Fremont Avenue, Suite 401
Los Angeles, CA 90071-1706
(855) 533-JATC (5282) phone

www.swctf.org



When to Apply

Monday through Friday, 8:00 AM to 4:00 PM

Length of Program

The minimum term of apprenticeship requires 48 months, 4,800 work hours and completion of 612 hours of related instructional classes taken at a Carpenters Training Center.

Requirements

An applicant for the Carpenters Training Program must be at least 18 years old or 17 years old with written parental consent. There is no maximum age limit.

Applicant must be in good health and physically able to perform all phases of the work.

Applicant must be able to read and understand the English language in order to comprehend instructions on the job and in related training classes, and to ensure personal and co-worker safety on the job.

Applicant must complete all application forms and provide evidence of legal employable status in the United States of America.

Union

United Brotherhood of Carpenters and Joiners of America Locals 150, 209, 409, 440L, 547, 630, 721, 743, 803, 944, 1506, 1607, 1800, 2007, 2361 and 2375

Specialized Craft

Cement Mason

Skills To Be Learned

Apprentices will learn how to perform all phases of concrete finishing, including but not limited to preparation, demolition, concrete sawing, stamped and stained concrete, green concrete construction including, but not limited to pervious and polished concrete setting screeds, forms, layout and mixing materials. The apprenticeship program provides training on setting up finish steps, cove base, curb and gutter, stamp concrete and decorative finishes. The program also provides instruction on troweling, edging, tamping, jointing, sacking, patching, dry packing, repairs, and preparations. Other training areas include machine operating, concrete sawing, Epoxy and Epoxy injection.

Wages

Hourly wages start at \$12.00 for entry-level apprentices and \$30.00 for journeymen.

Benefits

Health and welfare, vacation, pension plans and individual retirement account.

Contact

Southern California Cement Masons Joint Apprenticeship

Ed DeBrito, Apprenticeship Coordinator
1333 S. Mayflower Avenue, Suite 350
Monrovia, CA 91016
(626) 256-7674 phone
(626) 258-4040 phone
(626) 256-7671 fax

www.cementmasonslocal500.org

When to Apply

Monday through Friday, 8:00 AM to 4:00 PM

Length of Program

The four-year program requires 4,800 hours of on-the-job training and 80 hours of classroom instruction per year.

Requirements

Applicants must be at least 18 years of age and provide proof of age. There is no maximum age.

Union

Locals 500 and 600



Specialized Craft

Drywall/Finisher

Skills To Be Learned

Learn to finish wallboard to a uniform surface for painting or wall covering finish. Do this by learning to mix joint compound, embedding tape, applying additional coats of compound over it to provide a smooth uniform surface using a combination of hand and automatic tools. Will also learn to use spray texture equipment to further enhance the surface.

Wages

Hourly wages start at \$18.41 for entry-level apprentices and \$34.71 for journeymen.

Benefits

Health and welfare, vacation, annuity and pension plans.

Contact

Southern California Painting and Drywall Industries Apprenticeship

Jesus Fernandez
Director of Apprenticeship Training
Tom Nesbitt, Drywall Finishing
Training Coordinator
2077 Yates Avenue
Commerce, CA 90040
(323) 727-2811 phone
(323) 727-1180 fax

www.dc36.org

When to Apply

Monday through Friday, 9:00 AM to 4:00 PM

Length of Program

The apprenticeship consists of a three-and-a-half year program or 5,400 hours of on-the-job training. Must complete a total of 160 class hours a year.

Requirements

Must be 17 years of age and physically able to perform the work.

Union

International Union of Painters and Allied Trades (IUPAT) District Council 36



Specialized Craft

Electrician (inside wireman)

Skills To Be Learned

Apprentices will learn to install, maintain and repair many types of electrical equipment and electronic systems in residential, commercial and industrial establishments. Apprentices will also learn lighting, power and controls in any premise.

Wages

Hourly wages start at \$15.36 for entry-level apprentices and \$38.40 for journeymen.

Benefits

Health and pension plan

Contact

Electrical Training Institute

Brett Moss, Interim Training Director
6023 S. Garfield Avenue
City of Commerce, CA 90040
(323) 517-6910 phone
(323) 726-0623 fax

www.laett.com

When to Apply

The dates for 2014 are February 26, 2014 and October 22, 2014.

8:30 AM to 10:00 AM

Length of Program

Typically, during the term of your apprenticeship you will work 8,000 hours on-the-job for a five-year program with various electrical contractors. In addition, you will attend school for 1,200 hours during the five-year period. Wages start at a percentage of full journeyman pay and increase in increments through graduation to full pay.

Requirements

Algebra is a required. Either a year of high school algebra with a "C" or better or one semester of college algebra with a "C" or better. Also, a current valid ID is required to apply, and a driver's License is strongly recommended.

Union

International Brotherhood of Electrical Workers
Local 11



Specialized Craft

Floor Layers

Skills To Be Learned

Floor Layers install Artificial Turf, Carpet, Linoleum, Soft Tile, Rubber Tile, Laminate Flooring, Vinyl Composition Tile, Sheet Vinyl and a variety of specialized Flooring. Floor Layer Installers work with many sharp knives and other cutting tools, so there is always the danger of serious cuts. Lifting heavy loads such as rolls of carpet or sheet vinyl, bending, stretching and reaching in awkward positions can cause back problems. Training (called Hazardous Communication) teaches apprentices how to work with hazardous substances, found in some adhesives, safely.

Wages

The hourly apprentice wage starts at \$10.80, total benefits package is \$12.86. Journeyman wage is \$30.85, total benefits package is \$41.61.

Benefits

Health and welfare, plus pension plans.

Contact

Floor Layer Training

David Romero
11843 Smith Avenue
Santa Fe Springs, CA 90670
(562) 623-9244 phone

www.dc36.org

When to Apply

Please call for details.

Length of Program

During the term of the apprenticeship, apprentices will work a total of 6,032 on-the-job learning hours, 10 periods to 8, and 160 hours of Related Learning Classes. Apprentices will also attend supplemental related training classes for 144 hours per year for three years at the training center.

Requirements

Applicants must be at least 18 years of age, or age 17 with a guardian's written permission. There is no maximum age limit.

Union

Local Union 1247 under IUPAT and DC 36.



Specialized Craft

Glaziers

Skills To Be Learned

A Glazier, Architectural Metal and Glass Worker are individuals who work with glass and architectural metal. He or she is a fabricator of aluminum (or other related metals), that are used in the construction of buildings or storefronts. From the sill flashing to the top of the parapet cap on high rise buildings is where you will find us. If there are glass or glass products used, a glazier has been there.

Wages

The hourly wage starts at \$14.76 plus vacation pay for entry level apprentices and \$ 38.95 an hour for Journeyman.

Benefits

The program is sponsored by the Glaziers Architectural Metal and Glass Workers Union. As an employee and union member, you will be afforded excellent medical, dental and optical coverage as well as pension plan benefits.

Contact

Glazier Training Institute

Ed Garcia: Glaziers Apprenticeship Coordinator
11366 Markon Drive
Garden Grove, CA 92841
(714) 894-4017 phone
(714) 894-4094 phone
(714) 894-4097 fax

www.dc36.org

When to Apply

Call 714 894-4094, Ext. 19 for an appointment only.

Length of Program

The apprenticeship program consists of 8,000 on-the-job training hours, and six semesters of 160 RSI hours per year

Requirements

Applicants must be at least 18 years of age and possess a driver's license, SSN, and high school diploma/GED or equivalent.

Pass Basic Math Test with a 70% grade.

Also must be able to perform physical construction labor and not be afraid of heights!

Union

(IUPAT) International Union of Painters and Allied Trades District Council Local Union 636 Glaziers



Specialized Craft

Heat & Frost Insulators/Asbestos

Skills To Be Learned

The function of an insulator is to insulate, Mechanical Systems whether hot or cold, from ambient temperatures. Any surfaces having low, medium or high temperatures, such as boilers, refrigeration units, furnaces, heat exchangers, many pipes, tanks, etc., found in powerhouses, refineries, aboard ships, in high-rise buildings, will be insulated by our mechanics for process control, for fire protection, for personnel protection or for sound reduction. After the insulation has been applied, protective covers, coatings and jacketing are also fabricated and installed.

Wages

The hourly wage for apprentices start at \$14.46 and \$36.61 for Journeyman/Journeywomen.

Benefits

Health and welfare, plus pension plans.

Contact

Southern California Heat and Frost Insulators and Asbestos Workers Joint Apprenticeship Committee

Tony Magallanes, Apprenticeship Coordinator
670 East Foothill Boulevard, Suite 3
Azusa, CA 91702
(626) 334-6884 phone
(626) 334-7042 fax

www.awlocal5.com

When to Apply

Applications are accepted on the second Monday at the beginning of each Quarter (January, April, July, and October).

Length of Program

To complete the program, apprentices must work 8,000 hours or 5 years on-the-job, rotating through various work processes. Apprentices must also attend at least 800 hours of Related Supplemental Instruction.

Requirements

Must be at least 18 years of age, with a high school diploma or GED certificate. Must also have a valid California driver's license and social security card.

Union

International Association of Heat and Frost Insulators and Asbestos Workers Local 5



Specialized Craft

Laborers

Skills To Be Learned

The skills required are varied. Course offerings for apprenticeship include Certification courses (First Aid/CPR, OSHA 10, Fork Lift Safety, etc.), Equipment Endorsement courses (Aerial Boom Lift, Skid Steer, etc.) Environmental courses and specialized industry courses. A Construction Craft Laborer will do some or all of the following: pour concrete, pave roads with asphalt, lay pipe for sewers, work on demolition projects, perform environmental abatement and other tasks as required. The work is physically demanding and the hours can be long but the rewards are plentiful.

Wages

Starting wages are 50% of the journeyman level wages. Hourly pay raises are awarded after completing 500-hour increments of on-the-job training and 36 hours of related supplemental instruction. Hourly wages for entry-level apprentices start at \$16.00. Hourly wages for journeymen start at \$31.99.

Benefits

Health and welfare, vacation and pension plans.

Contact

Laborers Southern California Joint Apprenticeship Committee

1385 W. Sierra Madre Avenue Azusa, CA 91702
(626) 610-1700 phone
(626) 633-0205 fax

Contact(s):

Scott Gordon, Executive Director
Mike Rubio, Senior Apprenticeship Coordinator
Greg Phelps, Field Superintendent
Lu Gardner, Office Manager

When to Apply

Contact the apprenticeship office to request an application by calling the apprenticeship office.

Length of Program

The 18-month training program requires 3,000 hours of on-the-job training, including 224 hours of classroom instruction.

Requirements

Must be at least 18 years of age and physically able to perform the work.

Some courses offered require a GED or High School Diploma.

Union

Southern California District Council of Laborers include Locals 89, 220, 300, 507, 585, 652, 783, 802, and 1184.



Specialized Craft

Landscape & Irrigation Fitters

Skills To Be Learned

Apprentices are required to use picks and shovels at times. Work may include installing metal and cement pipes and tubing. Apprentices may layout water pipes, tubing, water irrigation and drainage systems. Apprentices will also measure cuts, thread water pipes and joint plastic pipes with glue.

Wages

Hourly wages start at \$12.43 for entry-level apprentices and \$24.86 for journeymen.

Benefits

Health and welfare, pension plans, dental care, vacation and retirement.

Contact

South California Landscape & Irrigation Fitter Apprenticeship Local 345

Vincent Diaz
Business Manager
1430 Huntington Drive
Duarte, CA 91010
(626) 357-9345 phone
(626) 359-0359 fax

www.ua345.org

When to Apply

Monday through Friday, 8:00 AM to 11:00 AM

Length of Program

Apprentices must complete 144 hours of classroom instruction (10 semesters) to graduate from the five-year program. Apprentices must also complete a total of 7,500 hours of on-the-job training to become a journeyman.

Requirements

Must be at least 18 years of age. Must also be able to speak English or be willing to take English classes.

Union

United Association of Journeyman and Apprentices of the Plumbing and Pipe Fitting Industry Local 345



Specialized Craft

Operating Engineers

Skills To Be Learned

Operating engineers are highly trained, skilled professionals who operate heavy construction equipment on high-rise buildings, roads and freeways, residential developments, dams, waterways, airports and underground tunnels. Operating engineers may perform specialized work operating cranes, concrete pumping, pile driving and drilling equipment. Operating engineers can either become heavy duty repairers for construction equipment or construction inspectors to examine compliance of blueprints and plans.

Wages

Hourly wages for entry-level apprentices start at \$22.84.

Benefits

Health and welfare, plus pension plans.

Contact

Operating Engineers Training Trust

Larry Hopkins, Assistant Director of Training
Operating Engineers Training Trust - Local 12
2190 S. Pellissier Place
Whittier, CA 90601
(562) 695-0611 phone
(562) 254-6898 cell
lhopkins@oett.net

www.oett.net

When to Apply

Must call the apprenticeship office each month to find out when to apply. The apprenticeship program gives a 30-day notice prior to the start of each program cycle.

Length of Program

The three-year program requires 6,000 hours of on-the-job training and six semesters of classroom instruction.

Requirements

Must be 18 years of age, with a high school diploma or GED certificate. Applicants must be able to read, write or speak English in order to comprehend training instructions as well as to ensure personal and co-worker on-site safety. An applicant must complete all application forms and provide evidence of legal employable status in the United States.

Union

International Union of Operating Engineers
Local 12



Specialized Craft

Painters

Skills To Be Learned

Painting is the application of paint, varnishes, lacquers, sealers, stains, etc. Painters also apply all types of wallpaper, vinyl wall fabrics and all types of coverings or coatings. Painters make all of the necessary preparations prior to application. Work will be performed on all types of buildings, both interior and exterior.

Wages

Hourly wages start at \$15.36 for entry-level apprentices and \$38.40 for journeymen.

Benefits

The painters program is jointly sponsored by the Trust Fund. As an employee and union member you will be afforded excellent medical, dental and optical coverage as well as vacation and pension plan benefits.

Contact

Painting

2077 Yates Avenue
City of Commerce, CA 90040
(323) 727-2811 phone
(323) 727-1180 fax

www.dc36.org

When to Apply

Applications are accepted on an on-going basis.

Length of Program

During the term of the apprenticeship, apprentices will work a total of 7,870 hours on-the-job. The training is broken into ten periods with various employers. You will also attend supplemental related training classes of 144 hours per year for three years at the training center.

Requirements

Applicants must be at least 18 years of age or 17 years old with a guardian's written permission. There is no maximum age limit.

Applicants must have a copy of their high school diploma or GED. In some programs, the applicant must pass a basic aptitude test. Applicants must also be able to pass a color blindness test.

Union

International Union of Painters and Allied Trades (IUPAT).



Specialized Craft

Pile Drivers, Bridge Wharf & Dock

Skills To Be Learned

This trade specializes in constructing bridges, marine structures, foundations, retrofit work, welding and deep sea construction. Work skills can include carpentry, deep sea diving, welding, rigging, manual labor and technical skills. Southern California and Southern Nevada are the geographical contract service areas for membership.

Wages

Hourly wages start at \$14.99 for entry-level apprentices and \$47.38 for journeymen.

Benefits

Health and welfare, with medical and dental plans per work hour contribution. Pension plans provided with pro-rated pay for yearly hours worked.

Contact

Southern California Pile Drivers Joint Apprenticeship & Training Program

John S. Schafer,
Business Manager and Recording Secretary
728 N. Lagoon Avenue
Wilmington, CA 90744-5499
(310) 830-5300 phone
(310) 830-2375 fax

www.swctf.org

When to Apply

First Wednesday of every month at 8:00 AM sharp.

Length of Program

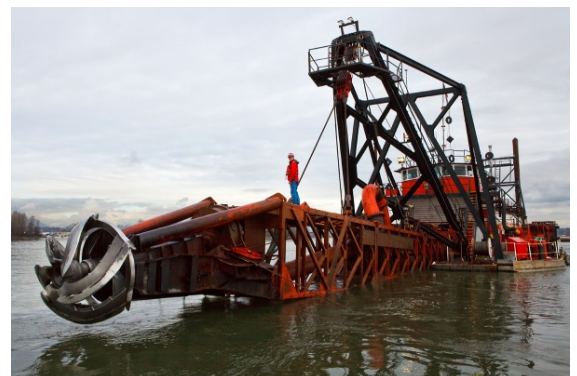
The four-year program requires 4,800 hours of on-the-job training and 612 hours of classroom training.

Requirements

Must be at least 17 years of age, with a high school diploma or GED certificate. Must also be in good physical health, be able to perform physical duties and comprehend instruction. Must have driver's license or birth certificate with a social security card or immigration registration card. Must furnish own tools and have reliable transportation to work and school.

Union

Union Pile Drivers, Bridge, Wharf and Dock Builders Local 2375



Specialized Craft

Plumbers

Skills To Be Learned

Apprentices will learn the UPC Plumbing Code, design and layout of all plumbing and medical gas systems, materials and methodology, fabrication and installation of systems, repair and maintain Plumbing systems, which are liquids or gases used for many types of systems even waste disposal systems.

Wages

Hourly wages for entry-level apprentices start at \$17.95.

Benefits

Health and welfare, plus pension plans.

Contact

Los Angeles Metropolitan Plumbers Joint Apprenticeship Training Committee

1111 W. James M. Wood Boulevard
Los Angeles, CA 90015
(213) 688-9095 phone
(213) 627-4624 fax

www.ajtraining.org

When to Apply

Monday through Thursday, 7:30 AM to 11:30 AM

Length of Program

The five-year program requires 1,500 hours of on-the-job training, per year, totaling 7,500 hours in five years.

Requirements

Must be 18 years of age, with a high school diploma or GED certificate. Must have a valid California driver's license, social security card, and appropriate INS work authorization documents.

Union

UA Plumbers Local 78



Specialized Craft

Refrigeration & Air Condition Fitter

Skills To Be Learned

Apprentices will learn to install, test, service, repair and overhaul refrigeration and air conditioning systems in commercial, industrial and public buildings.

Wages

Starting hourly wage is dependent on each contract.

Benefits

Health and welfare, plus pension plans.

Contact

L.A. and Orange Counties Air Conditioning and Refrigeration Joint Journeymen and Apprenticeship Training Center

Tom Newbro
Director of Training
2220 S. Hill Street
Los Angeles, CA 90007-1441
(213) 747-0291 phone
(213) 747-5669 fax

www.ua250.org

When to Apply

Every Friday from 8:00 AM to 11:00 AM

Length of Program

The five-year program requires 1,800 hours of on-the-job training and three hours of classroom instruction twice a week per year.

Requirements

Must have either completed and passed 10 credits of high school level or three units of college level algebra, geometry, or received a certificate of completion or associate of science degree in air conditioning and refrigeration from a JJATC/JAC approved community college, trade or technical school.

Union

Local Union 250 AFL1CIO Steam Refrigeration & Air Conditioning-Pipe Fitters and Apprentices of the United Association



Specialized Craft

Reinforcing Ironworker

Skills To Be Learned

Fabricate and place steel bars (rebar) in concrete forms to reinforce structures. Place rebar on appropriate supports and tie them together with tie wire. Install post-tensioning tendons (cables) to place in concrete forms along reinforcing steel. Stress the tendons using hydraulic jacks and pumps after the concrete is poured and hardened. Load, unload, move and set reinforcing steel. Have knowledge of fiber line, wire rope, hoisting equipment and proper hand signals.

Wages & Benefits

Apprentice wages begin at 50% of Journeyperson rate. Along with vacation pay, annuity, pension and health, and welfare benefits.

Contact

Ironworkers Joint Apprenticeship Training Center

Paul Martinez
Apprenticeship Coordinator
5555 Fresca Drive
La Palma, CA 90623
(714) 228-9744 phone
(714) 228-9750 fax

www.universityofiron.org

When to Apply

Applications are available 1:00 PM to 3:00 PM on Thursday.

Length of Program

The four-year program requires 5,600 hours of on-the-job training, 200 hours per year, in four years.

Requirements

Must be 18 years of age, with a high school diploma or GED certificate. Must present proof of age, high school diploma, GED, or DD-214 showing completion.

Union

International Association of Bridge, Structural, Ornamental and Reinforcing Ironworker Local 416



Specialized Craft

Roofer & Waterproofer

Skills To Be Learned

Apprentices will learn to prepare and apply protective coverings, such as shakes, asphalt, felt, tar, gravel, metal and composition shingles, to the roofing/waterproofing surfaces of a building. Apprentices will also learn to inspect problem roofs to determine whether the best procedure is to repair or replace the roof surface. Apprentice will also learn the entire roofing and waterproofing Envelope System covering the migration of all moisture penetrations in all structures and building.

Wages

Hourly wages start at \$19.12 for entry-level apprentices and \$34.65 for journeyman.

Benefits

Health and pension.

Contact

Southern California Roofers & Waterproofers Joint Apprenticeship & Training Committee

Lupe Corral
Apprenticeship Coordinator
1315 E. Grand Avenue
Pomona, CA. 91766
(909) 469-9847 phone

www.calapprenticeship.org

When to Apply

Monday through Friday, 9:00 AM to 3:00 PM

Length of Program

The three-year program requires 5,250 hours of on-the-job training and 144 hours of classroom instruction per year.

Requirements

Must be 18 years of age and pass the oral interview and provide verification of a high school diploma or GED certificate. Must also be able to read, speak and write English.

Union

United Union Roofer, Waterproofer and Allied Workers Locals 36 and 220



Specialized Craft

Sheet Metal Worker

Skills To Be Learned

Apprentices will learn how to make and install ductwork, welding and architectural sheet metal. Apprentices will also learn how to balance an air conditioning system as well as drafting, reading blueprints, and designing duct systems.

Wages

Hourly wages start at \$20.05 for entry-level apprentices and \$38.07 for journeymen.

Benefits

Health and welfare, plus a 401A plan.

Contact

Southern California Sheet Metal JATC

633 N. Baldwin Park Blvd.
City of Industry, CA 91746
(626)968-3340 phone
(626) 968-3379 fax

www.socalisma.org

When to Apply

Monday through Friday, 8:00 AM to 4:00 PM

Length of Program

The program is five years.

Requirements

Must be at least 18 years of age.

Union

Sheet Metal Workers International Local 105



Specialized Craft

Steam Fitter/ Pipe Fitter

Skills To Be Learned

Apprentices will learn how to make and install, repair and maintain low- and high- pressure steam, hot water and gas piping systems, and various types of process piping systems found in industrial operations, such as oil refineries, pipelines, power plants and pulp mills.

Wages

Hourly wages start at \$18.25 for entry-level apprentices and \$40.57 for journeymen.

Benefits

Health and dental care, vacation and pension plans.

Contact

Joint Journeymen & Apprenticeship Training Center

18355 S. Figueroa Street
Gardena, CA 90248
(310) 660-0035 phone
(310) 329-2465 fax

www.ua250.org

When to Apply

Fridays, 8:00 AM to 11:00 AM

Apprentices must apply in person. Call (213) 747-0291.

Length of Program

The five-year program requires 1,500 hours of on-the-job training annually and a minimum of 216 hours of classroom instruction per year.

Requirements

Must be at least 18 years of age, with a high school diploma or GED certificate. It is highly recommended that applicants complete one full year of high school algebra, with a passing grade of C or better, or one post-high school algebra course with a passing grade of C or better.

Union

Steam-Refrigeration-Air Conditioning Pipefitters and Apprentices of the United States and Canada Local 250.

Specialized Craft

Structural Ironworker

Skills To Be Learned

Structural/Ornamental/Riggers—Unload erect, connect and weld fabricated, beams to form the project skeleton. Work primarily on industrial, commercial and residential buildings. Build towers, bridges, stadiums and pre-fabricated metal buildings. Erect and install pre-cast beams, columns and panels. Install metal windows onto buildings and on a building's masonry or wooden openings. Erect curtain wall and window wall systems that cover the steel or the reinforced concrete structure of a building. Install and erect metal stairways, catwalks, grating, doors, railings, fencing, elevator fronts and building entrances.

Wages & Benefits

Apprentice wages begin at 50% of Journeyman rate. Along with vacation pay, annuity, pension and health, and welfare benefits.

Contact

Ironworkers Joint Apprenticeship Training Center

Paul Martinez
Apprenticeship Coordinator
5555 Fresca Drive
La Palma, CA 90623
(714) 228-9744 phone
(714) 228-9750 fax

www.universityofiron.org

When to Apply

Applications are available 1:00 PM to 3:00 PM on Thursday.

Length of Program

The apprenticeship is a four-year program that includes a minimum of 200 hours per year of related classroom instruction and 5,600 hours on-the-job-training.

Requirements

Must be 18 years of age, with a high school diploma or GED certificate. Must present proof of age, high school diploma, GED, or DD-214 showing completion.

Union

International Association of Bridge, Structural, Ornamental and Reinforcing Ironworker Local 433



Specialized Craft

Sound & Communication

Skills To Be Learned

Apprentices will learn to install, maintain and repair all sound communications, data, fire alarm and security systems.

Wages

Hourly wages for entry-level apprentices start at \$12.26. Journeymen system installers earn \$27.25, and journeymen system technicians earn \$29.05 an hour.

Benefits

Health and pension plans.

Contact

Electrical Training Institute

Brett Moss
Interim Training Director
6023 S. Garfield Avenue
City of Commerce, CA 90040
(323) 517-6910 phone
(323) 726-0623 fax

www.laett.com

When to Apply

Fourth Wednesday of every month, 8:30 AM to 10:00 AM

Length of Program

System installers have a three-year program that requires 4,800 hours on-the-job training, including six semesters of classroom instruction. System technicians have a four-year program that requires 6,000 hours of on-the-job training, in addition to eight semesters of classroom instruction.

Requirements

Must be at least 18 years of age, with a high school diploma or GED certificate. If the applicant doesn't have algebra, they must take the entrance exam. If they have the algebra, they can waive the test.

A current valid ID is required and a driver's license is strongly recommended. For more information, visit www.laett.com



Specialized Craft

Surveyor

Skills To Be Learned

Apprentices will learn blueprint and map reading, calculations of bearings, azimuths, coordinates, distance and elevations. The field procedures require the performance of various field surveys from rough layout to precise legal descriptions of property, simple construction and complex projects.

Apprentices will also learn the proper use of various hand and power tools.

Wages

Hourly wages start at \$16.43 for entry-level apprentices and \$39.71 for journeymen.

Benefits

Health and welfare, plus pension plans.

Contact

Southern California Surveyors Joint Apprenticeship Committee

Darrell Lewis
9480 Utica Avenue, Suite 604
Rancho Cucamonga, CA 91730
(909) 243-7973 phone

www.scsurveyjac.org

When to Apply

Office hours Monday through Friday 8:00 AM to 5:00 PM. **Applications are currently closed.** For more information, visit www.scsurveyjac.org

Length of Program

The three-year program requires 6,000 hours of on-the-job training and five semesters of classroom instruction.

Requirements

Must be 18 years of age, with a high school diploma or GED certificate. Must also be able to read, write, and speak English. It is required to obtain a passing score (75% or higher) on the Surveyors Joint Apprenticeship Qualifications Test.

Union

International Union of Operating Engineers
Local 12



Specialized Craft

Tile Finisher & Marble Finisher

Skills To Be Learned

Apprentices will learn how to mix construction materials for setters and prepare area for installation. Apprentices will also learn how to grout, clean and polish, and repair and restore.

Wages

Hourly wages start at \$9.00 for entry-level apprentices and \$16.65 for journeymen start at.

Benefits

Health and welfare, plus pension plans.

Contact

Tile Marble Finishers Joint Apprenticeship and Educational Committee

Wayne McAdam, Apprenticeship Coordinator
9730 E. Garvey Avenue
South El Monte, CA 91733
(626) 329-0850 phone
(626) 329-0854 fax

www.tileunion.org

When to Apply

Monday through Friday, 7:00 AM to 3:00 PM

Length of Program

The two-year program requires 4,000 hours of on-the-job training and a minimum of 144 hours of classroom instruction.

Requirements

Must be at least 17 years of age (with parental consent), and have a high school diploma or GED certificate. Applicants must show proof of passing ninth-grade mathematics. Applicants must also be free from physical handicaps that may deter their performance of work in this trade. No physical exam is required.

Union

Tile, Marble and Terrazzo Workers Local 18



Specialized Craft

Transportation Systems

Skills To Be Learned

Apprentices will learn to install, maintain and repair many types of electrical equipment and electronic systems in traffic control, street lighting systems and smart freeways. Apprentices will also learn to install, connect and test electrical wiring systems for light, power and communications (data) in traffic control and street lighting systems.

Wages

Hourly wages start at \$15.34 for entry-level apprentices and \$38.35 for journeymen.

Benefits

Health and pension plans.

Contact

Electrical Training Institute

Brett Moss
Interim Training Director
6023 S. Garfield Avenue
City of Commerce, CA 90640
(323) 517-6910 phone
(323) 726-0623 fax

www.laett.com

When to Apply

The dates for 2014 are February 26, 2014 and October 22, 2014.

8:30 AM to 10:00 AM

Length of Program

The four-year program requires 7,200 hours on-the-job training and eight semesters of supplemental classroom training.

Requirements

Algebra is strongly recommended but not required to apply for the program. A **driver's License is required with no more than 1 point on the driver's license**. For more information, visit www.laett.com.

Union

International Brotherhood of Electrical Workers
Local 11



Helmet to Hardhats



Quality Careers for America's Military Veterans

Helmet to Hardhats is a national, federally-funded program that exists to connect National Guard, Reserve and transitioning active-duty military members with quality career training and employment opportunities within the building and construction industry.

The program is sponsored by the fifteen unions of the building and construction trades, along with construction industry employer associations.

The program is designed ease the difficult passage back into civilian life for military families, providing lucrative career opportunities and economic security to those who have earned the promise of a nation for their years of dedicated service.

Helmet to Hardhats collects nationwide career opportunities within the building and construction industry and matches that data to former military personnel interested in a career within the industry. Interested candidates can access information about careers and apprenticeships, and fill out a formal application and profile, via the Internet from anywhere in the world.

With the implementation of dozens of Statewide Direct Entry programs, Helmet to Hardhats candidates are able to get into quality construction careers soon after applying for them. Once a state proclamation has been signed – and over 20 states have already signed on – it allows all Joint Apprenticeship Training Councils and Local Unions in the state to accept current and former military personnel into their training programs on a prioritized basis, as well as providing credit for military training and experience.

Interested military candidates need only to log on to the Helmet to Hardhats web site at www.helmetstohardhats.org and follow the instructions for filing an online application and profile. All candidates will then be contacted by a representative from the Helmet to Hardhats who will begin the process of matching them with an appropriate apprenticeship training program in a location and the field of interest expressed through the applicant's profile. Prior experience with a particular craft or trade is not necessary.

Providing stable, secure, and prosperous civilian careers for the men and women who serve in the military is the foundation of the American promise to its veterans.

Helmet to Hardhats is all about standing up for what's right...and it's the story of how an entire industry has come together not just to reward those who have bravely served this nation with dedication, honor and courage, but to enlist those same veterans to put their military training, values and discipline to work in carrying out a new mission for America.

www.helmetstohardhats.org

Editor-in-Chief: Veronica Soto, Emerald Cities-Los Angeles

Project Leader: Anabel Barragan, SGI Construction Management

Artwork: Danielle Mikaio, SGI Construction Management



Local Office:
707 Wilshire Boulevard, Suite 3800
Los Angeles, CA 90017

National Office:
1140 Connecticut Ave., NW, Suite 1210
Washington, DC 20036

www.emeraldcities.org